

Brandenburg
Invest | WFBB

German „Energiewende“

Shared Project and Investment Opportunities
in Germany's Capital Region Brandenburg

Supported by:



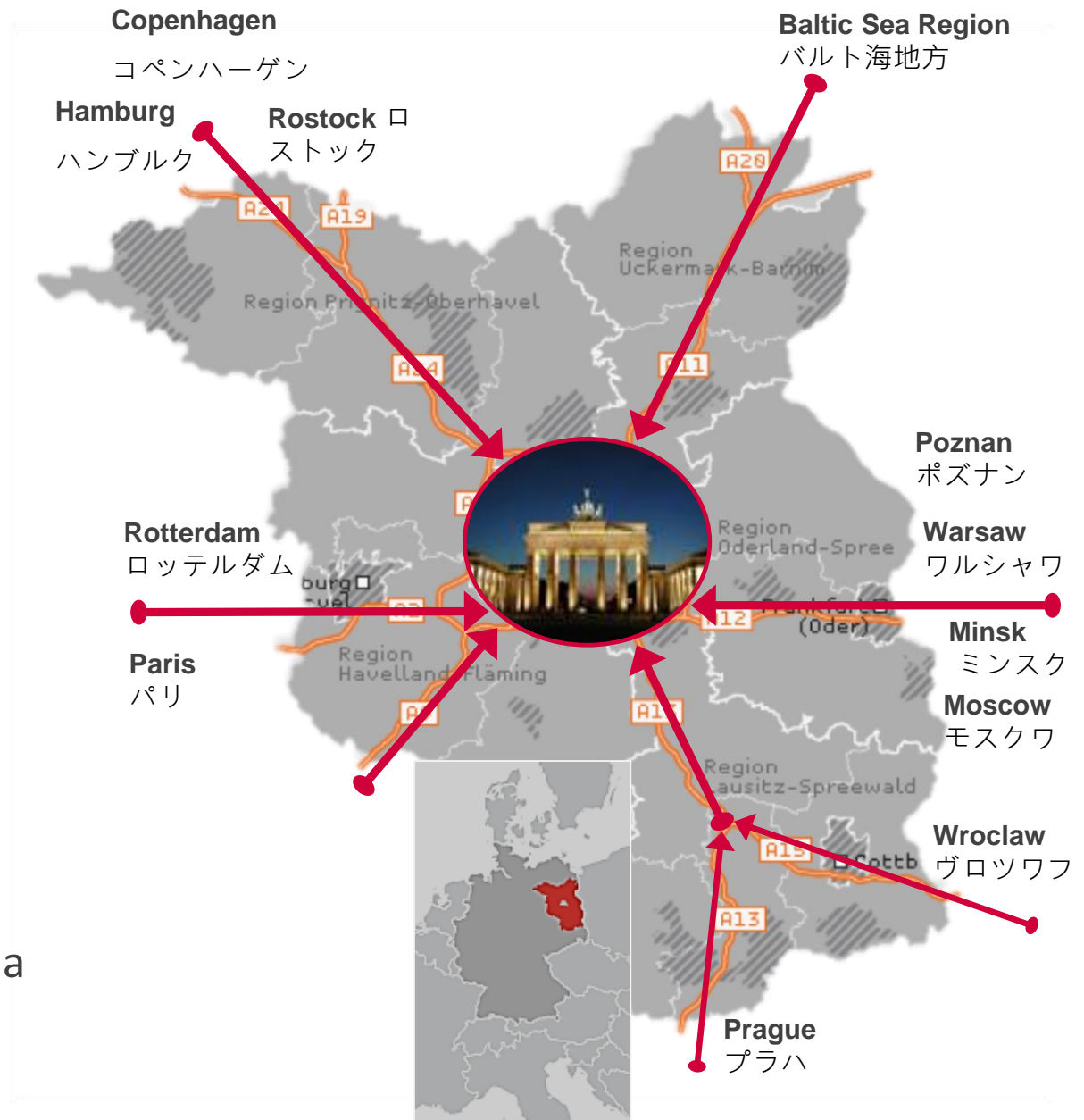
on the basis of a decision
by the German Bundestag



Focal point of European and German business

Gateway between East and West

- More than **6 million inhabitants** in Berlin-Brandenburg, more than Denmark, Norway or Finland
- Almost as large as **Belgium**
- 71% Services Industries,
- 26 % Manufacturing
- 3 % Agriculture
- Direct access to the emerging markets in Eastern Europe & Russia



Business Clusters in Berlin-Brandenburg

Life Sciences & Healthcare



Companies
app. 20,902

Employees
app. 368,373

Energy Technology



Companies
app. 6,318

Employees
app. 57,868

Optics



Companies
app. 1,531

Employees
app. 17,688

Mobility



Companies
app. 17,589

Employees
app. 206,234

ICT/Media/ Creative Industr.



Companies
app. 46,920

Employees
app. 261,071

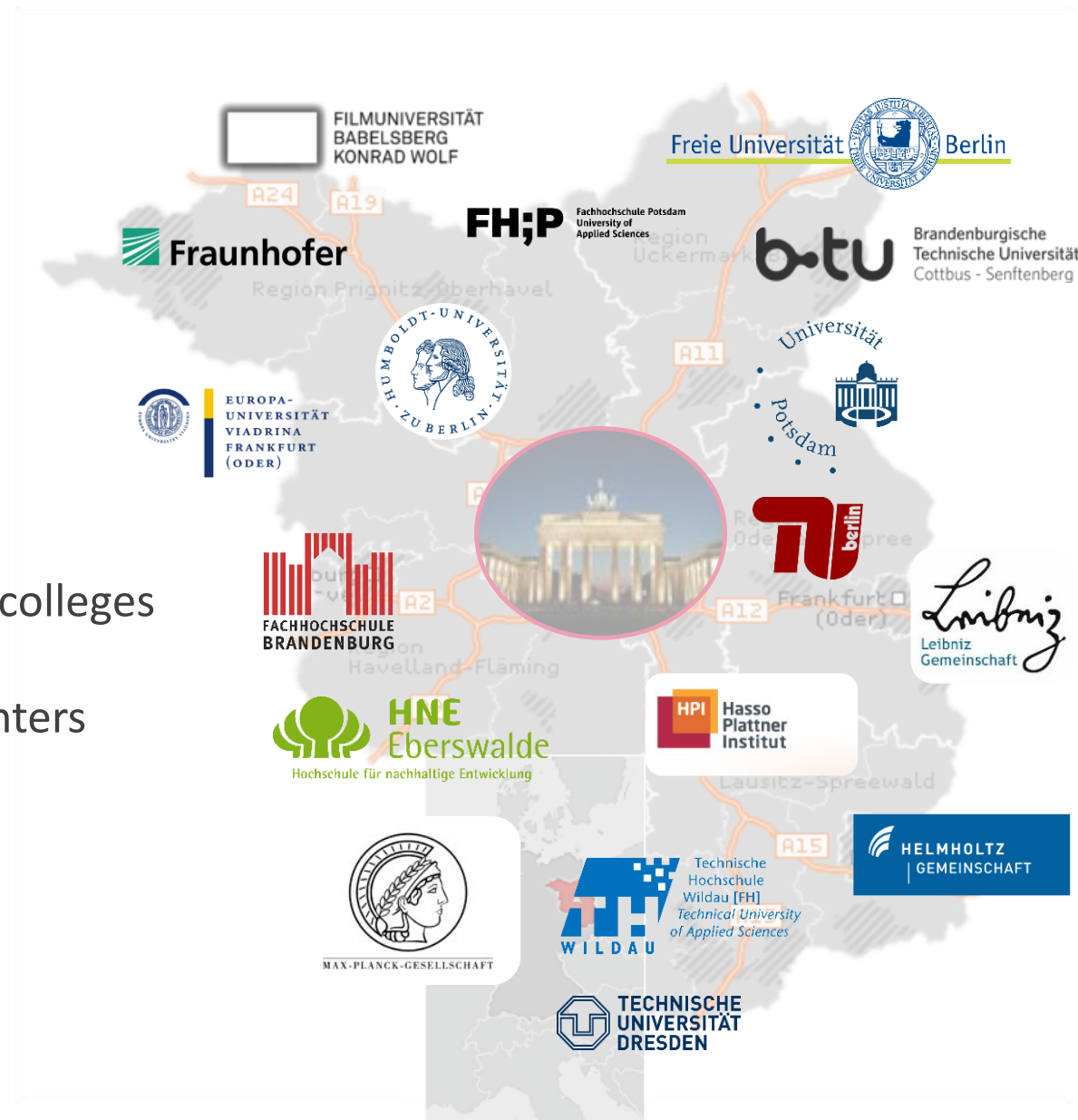
International companies in Brandenburg



Higher education and first class research



- More than 50 universities and colleges
- 45 Technology and start-up centers
- 100 research institutions
- 34 Nobel Prize winners



Manufacturing in Brandenburg

Japanese companies in the Capital Region



Proseat - Sekisui Chemicals, Brandenburg

Takeda Pharma, Brandenburg

Olympus Surgical, Brandenburg

Nagase Group - Pactech

Osaka Gas – Jacobs Carbons

Yamaichi Manufacturing, Brandenburg

TDK Sensors AG & Co. KG, Brandenburg

e-shelter - NTT Group, Berlin

Sony Corp., Berlin

UNIQLO, Berlin

JNC Corp. (Japan New Chisso), Berlin...

Manufacturing in Brandenburg

Japanese institutions in the Capital Region



Japanese Embassy

JETRO Berlin

Japanese German Centre Berlin

Japanese Industry and Trade Association

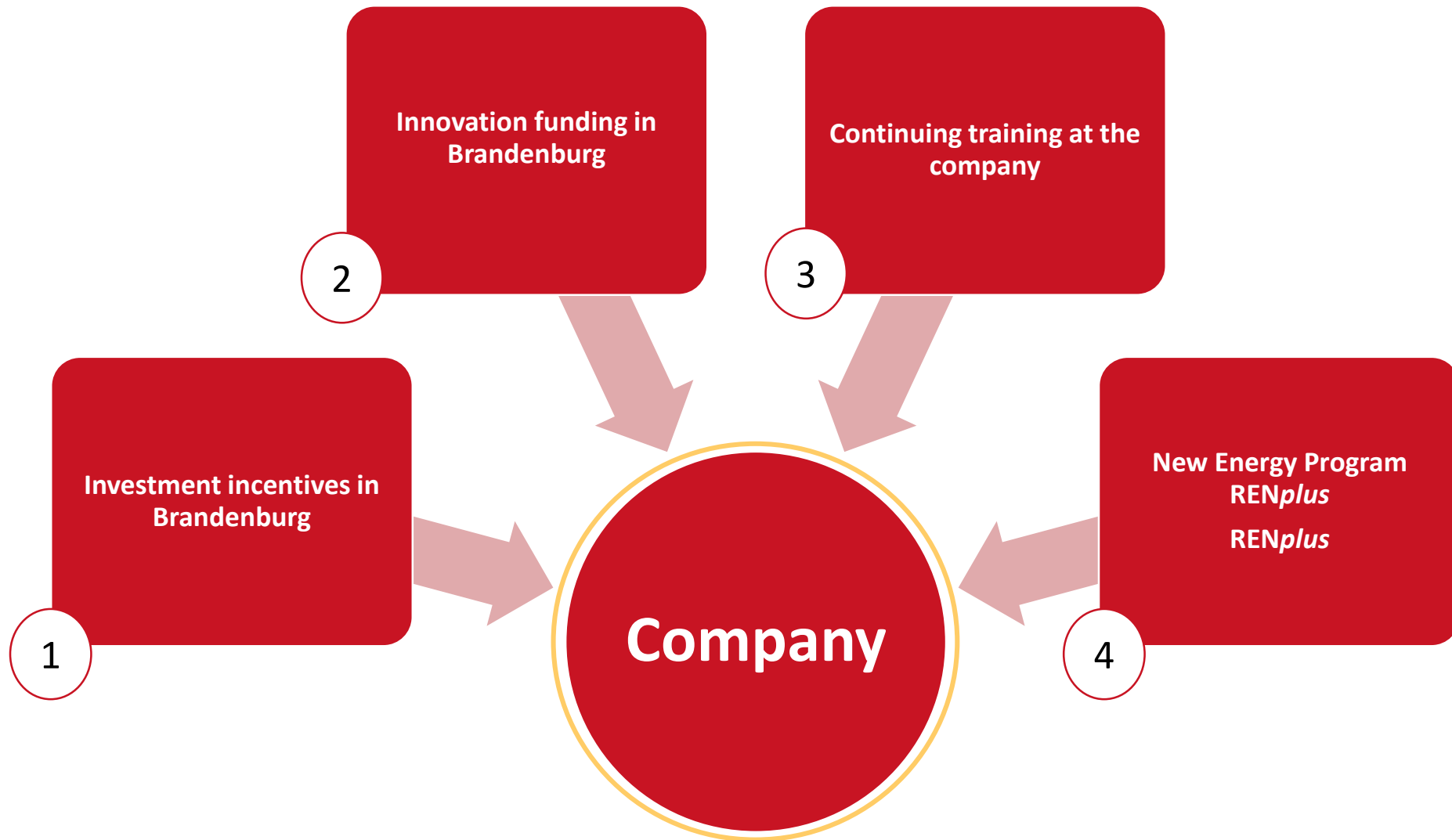
Japanese International School Berlin

A couple of highschools offering Japanese Courses



3.900 Japanese citizens are living in Berlin and
Brandenburg

Incentive Programs for Companies



GRW-G guidelines for large companies as applies to a BIG Corp.

Who can expect what amount of grants?

Large enterprises (LE):	10 % (20 %)
Medium sized enterprises (ME):	20 % (30 %)
Small enterprises (SE):	30 % (40 %)

Basic requirement for funding:

Establish a new manufacturing site in Brandenburg

or

Add a production line of a new product in Brandenburg

What will be funded?

Investment: Purchase of new fixed assets

or

Wages: Ex-post compensation for labour-cost expenditures



Announcement

3rd German-Japanese Call for Proposals for joint R&D projects by Small and Medium-sized Enterprises (SMEs)

Deadline for proposal submissions: March 25th, 2019

1. Scope

Germany and Japan are announcing a Call for Proposals for joint R&D projects.

Applicants are expected to develop ready-to-market solutions for products, technology- based services or processes which have strong market potential.

The Ministry of Economy, Trade and Industry (METI) and the German Federal Ministry for Economic Affairs and Energy (BMWi) will provide access to public funding for joint projects provided by the Co-funding Program New Energy and Industrial Technology Development Organization (NEDO) and by the BMWi's Central Innovation Programme for SMEs (ZIM).

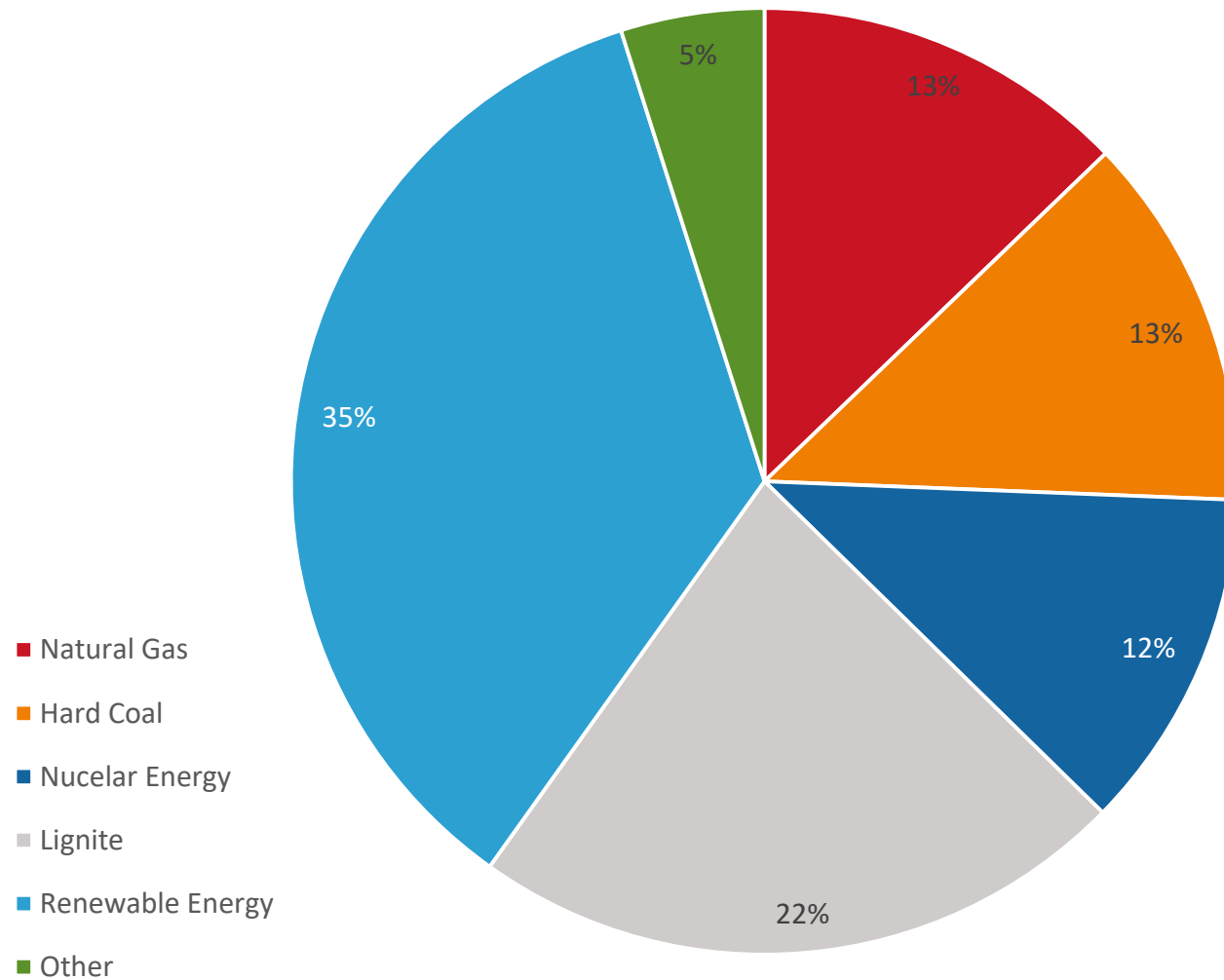
NEDO and BMWi (Coordinator: AiF Projekt GmbH) will provide all necessary assistance to project partners during project proposal, evaluation and monitoring phase.

NEDO and AiF Projekt GmbH will evaluate the submitted proposals and communicate the results within about 3 months after the call deadline.

- Energy in Germany
- Energy in Brandenburg
- Cluster Energy Technology Berlin-Brandenburg
- Energy strategy 2030 Brandenburg
- H₂ Initiative Brandenburg
- Regulatory Test Beds
- Structural Transformation Lausitz

Energy in Germany

Electricity mix 2018



lignite exit
2038

nuclear exit
2022

Source: <https://www.unendlich-viel-energie.de/mediathek/grafiken/der-strommix-in-deutschland-2018>

7. German Energy Research Program

- focus on "Regulatory Test Beds of the Energiewende" as a new subsidy column for the market preparation of innovative solutions
- reorientation towards cross-sector and cross-system
- improved integration of funding instruments
- closer international cooperation !

Energy research is to be funded with around € 6.4 billion from 2018 to 2022
(This corresponds to an increase of around 45 percent compared to the predecessor program in the comparison period 2013 to 2017)

Source: <https://www.bmwi.de/Redaktion/DE/Artikel/Energie/Energieforschung/energieforschung-7-energieforschungsprogramm.html>

Brandenburg combines traditional and renewable energy production

Lignite power plant Jänschwalde
3,000 MW
19.5 billion kWh in 2018

Lignite power plant Schwarze Pumpe
1,600 MW
11.6 billion kWh in 2018

3,700 wind turbines
35,000 photovoltaic systems
500 biomass systems
41,000 heat pumps
23,000 solar thermal systems

highest installed electric power from
renewable energies per inhabitant in
Germany: 1,355 kW(peak)

Source: www.leag.de & www.mwe.brandenburg.de

1. Final energy consumption is decreased by 23 %
2. Renewable energies account for 40 % of final energy consumption
3. Primary energy consumption is reduced by 20 %
4. Renewable energies account for at least 32 % of primary energy consumption

CLUSTER
ENERGY TECHNOLOGY
BERLIN BRANDENBURG

- more than 6,400 businesses
- almost 58,000 employees
- about 28,7 billion € total revenue
- a cluster management of 8 staff members
- Brandenburg and Berlin are working together



Cluster Chairman:
Prof. Dr. Dr. h. c. Reinhard F. J. Hüttl



Head of Clustermanagement:
Klaus Henschke



Head of Clustermanagement:
Wolfgang Korek

Competition for ideas "Regulatory Test Beds of Energiewende"

The first call focuses on: (deadline April 2019)

1. Sector coupling and hydrogen technologies
2. Large-scale energy storage in the electricity sector
3. Energy-optimized neighborhoods

Requirements:

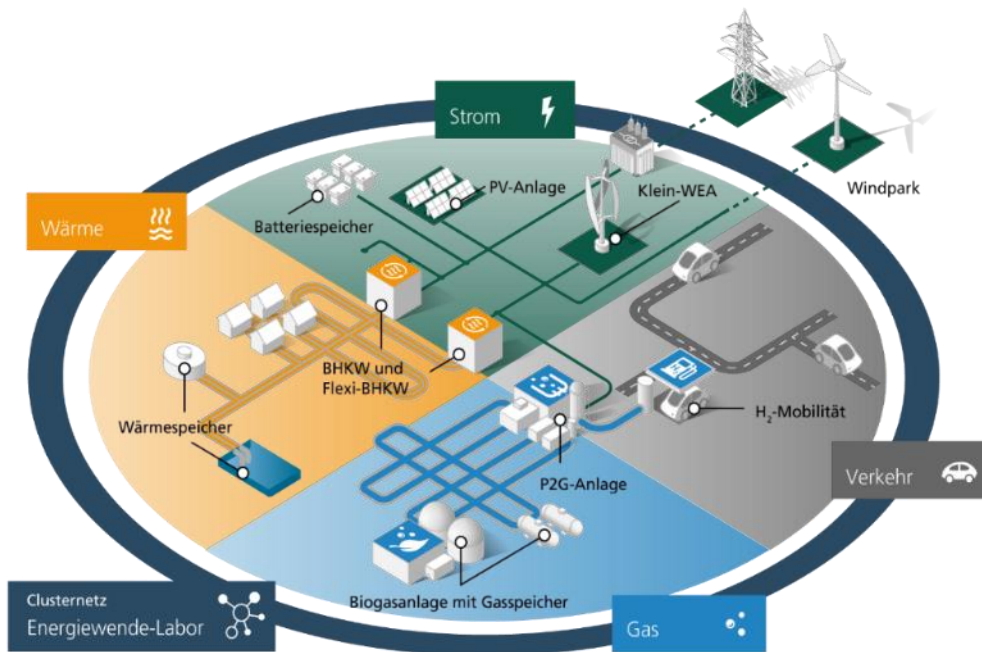
1. systemic dimension
2. tested on a relevant, industrial scale
3. socio-economic aspects and social issues
4. providing answers for market models, business models and regulatory regimes

Funding of up to € 400 million from 2019 to 2022

Source: https://www.energieforschung.de/antragsteller/foerderangebote/ideenwettbewerb_reallabore-der-energiewende

Regulatory Test Beds

Energy transition lab Ketzin (Greater Berlin)



Intelligent, multi-dimensional cell of different technologies

- regenerative energy production
- energy transformation (P2X)
- energy storage

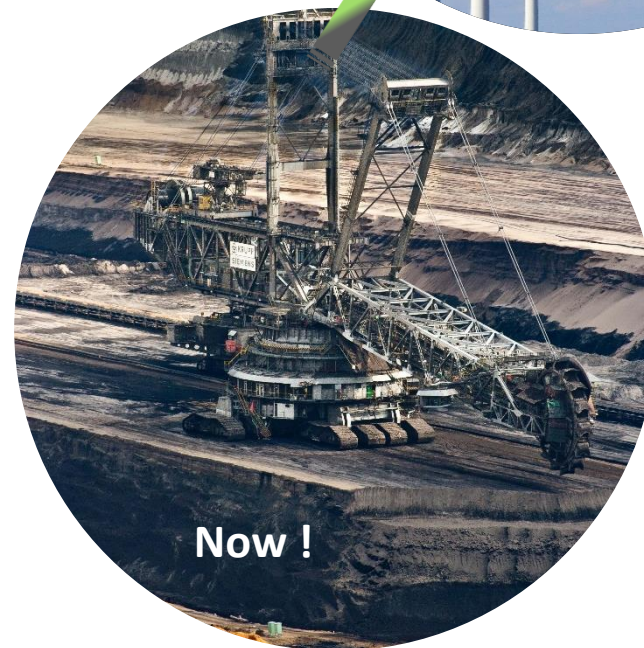
in connection with transport infrastructures
(electricity, gas, heat)

Lead investor: **e.d.is** subsidiary of **e.on**

Structural Transformation of Lausitz Lignite Area



Lausitz area: 13,000 km²
Inhabitants: 1 m



Brandenburg Invest | WFBB

We are looking forward to
a successful cooperation with you.

brandenburg-invest.com

Roald Koch, Director
Foreign Direct Investment / Asia
Electronics Industries,
Energy Technologies
T +49 331 – 730 61-214
M +49 174 9450893
E roald.koch@wfbb.de

Supported by:



on the basis of a decision
by the German Bundestag

These documents are intended for presentation purposes only. The content is protected by copyright. All rights to the presentation and its contents are entitled to the Brandenburg Economic Development Corporation (WFBB). The transfer to third parties as well as any reproduction, modification or other use and the use of the whole content or parts of it, requires the prior written agreement of the WFBB.