

# Infervision

*With A.I., We Improve Human Life*

Sun Yipeng, Director Infervision Europe  
2021.03

# CONTENTS



Company  
Introduction

---



Venture in Germany and  
Europe

---







## I. Company Introduction

# About InferVision

InferVision is a pioneer in healthcare artificial intelligence

**“Scale + Scope” Product development strategy.** **“Scale” to cover different diseases and “Scope” to cover the whole pathway of each disease.** Dedicate efforts to areas including clinical assistance, quality control, data mining, research support, patient management, and decision support.

Product series including InferRead, InferQC, InferScholar, InferMatrix, InferSight, dedicated for six sectors on **AI-assisted screening, diagnosis, treatment, follow-up management, quality control, and AI-related R&D.**

**2016**

Starting Year

**300**

Associates

**AI Improves  
Human Life**

Company Vision

**Beijing**

Headquarter

**U.S., Germany, Japan,  
HK(China), etc.**

Branches



# Received Regulatory Clearance in Four Countries



China

The **first** Class III NMPA Clearance worldwide



EU

The **first** Lung AI-Assisted Diagnosis Product with European CE Clearance in China



USA

The **first** Lung AI-Assisted Diagnosis Product with USA FDA Clearance worldwide



Japan

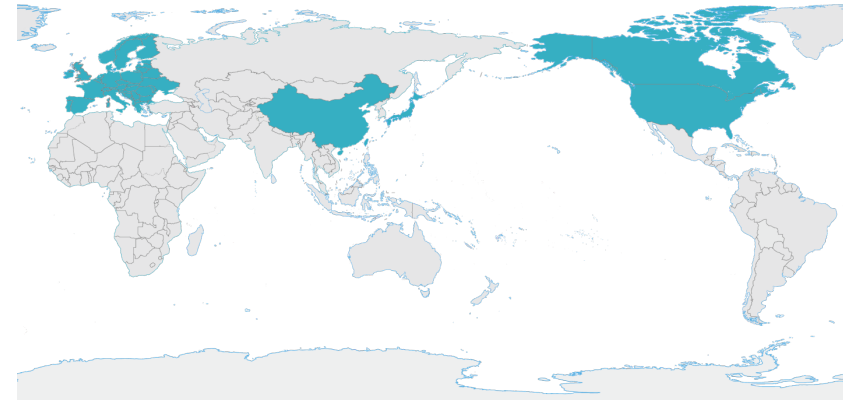
The **first** Lung AI-Assisted Diagnosis Product with Japan PMDA Clearance worldwide



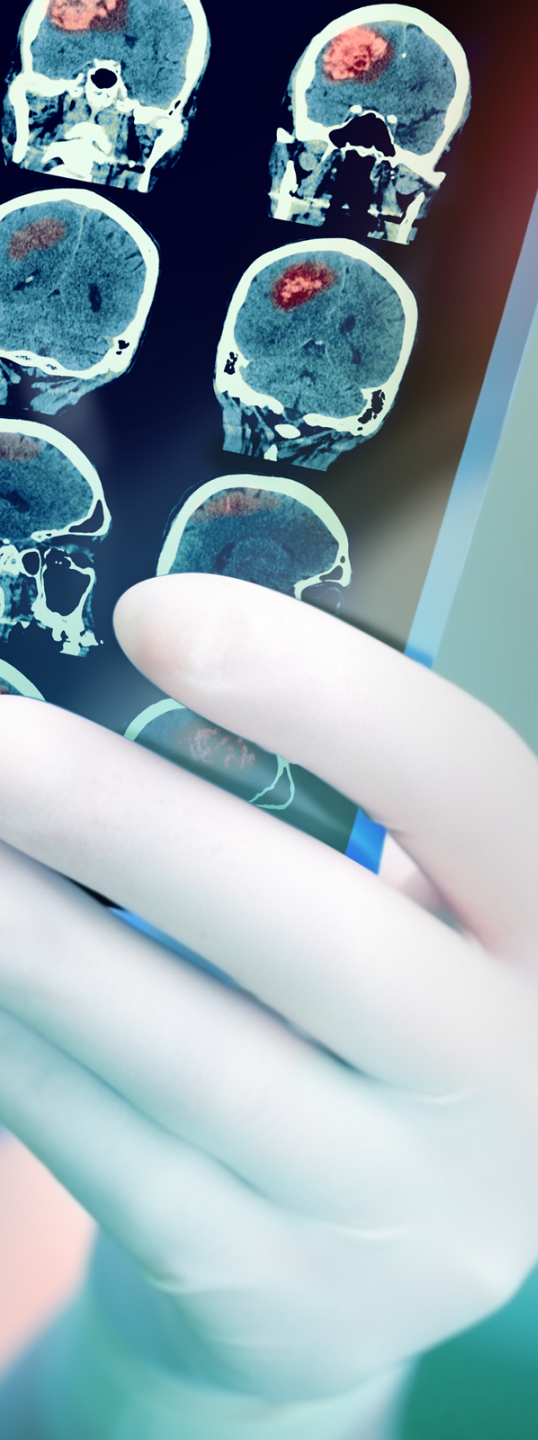
# InferVision Coverage



**33** Provinces National Wide



**20+** Countries Worldwide



## **II. Venture in Germany and Europe**



# European Commission Adopts InferVision Technology

[European Commission](#) > [Strategy](#) > [Shaping Europe's digital future](#) > [News](#) >

Shaping Europe's digital future

NEWS ARTICLE | 19 May 2020

## Using AI to fast and effectively diagnose COVID-19 in hospitals

The European Commission will invest in the use of Artificial Intelligence to speed up the diagnosis of COVID-19 and improve the future treatment of patients. A software developed to assist the work of medical staff by analysing images of pulmonary infections is introduced in 10 hospitals across Europe.



### About Artificial intelligence

[Policies](#)

[Blog posts](#)

[News](#) 

[Events](#)

[Projects](#)

[Funding](#)

[Consultations](#)

# Experience Sharing Seminar on COVID- 19



Zoom ID: 224 147 9986

**COVID-19**

International Frontline Experience Sharing Seminar

**AGENDA**

15th April 2020 (UTC+8, Beijing)  
07:00(UTC-4, EDT) 12:00(UTC+1, London)  
20:00(UTC+9 Tokyo)

- 19:00-19:10 Welcome and Introduction  
Dongfeng Qi, CEO China Speech Valley
- 19:10-19:40 The Role of CT and Its Findings in COVID-19  
(China) Haibo Xu, M.D., Director of Department of Radiology, Zhongnan Hospital of Wuhan University
- 19:40-20:10 Potential Role of AI and Quantification on radiological images in COVID-19  
(USA) Paras Lakhani, M.D., Associate Professor of Radiology, Thomas Jefferson University Hospitals
- 20:10-20:40 Research on the differential diagnosis of COVID-19 linked pneumonia and other type of pneumonia by AI  
(Italy) Carlo C. Quattrocchi, M.D., PhD., UOC Diagnostic Imaging and Interventional Radiology Manager, Departmental Faculty of Medicine and Surgery, Campus Bio-Medico University of Rome
- 20:40-21:10 The situation of Covid-19 in Japan and how specialize clinic counter it  
(Japan) Yoshihiro Furusawa, President of CVIC Medical Corporation and CEO of CV Imaging Science Co., Ltd

<https://zoom.us/j/2241479986>

Organizers: China Speech Valley & Anhui InferVision Technology Co., Ltd.  
Co-Organizer: ECO Microwave

InferVision supported clinal experts from China, Japan, Italy and USA to share experience on combatting COVID 19





# **Building Community of Common Health for Mankind**