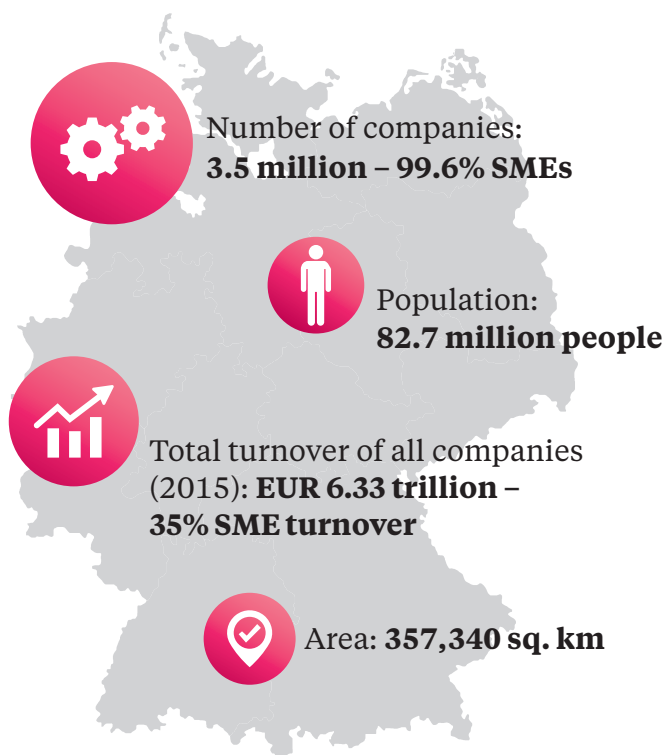


# Germany in Numbers



## Foreign Trade

in EUR billion

	2015		2016		2017	
Exports	1,194	+6.2%	1,204	+0.9%	1,279	+6.3%
Imports	949	+4.3%	955	+0.6%	1,035	+8.3%
Balance	+245		+249		+244	

### Export goods\* (2016):

Automotive 19%, machines 14%, chemical goods 9%, IT-hardware, electronics, optical goods 8%, electrical goods 6%, pharmaceuticals 6%, other vehicles 5%, food and feed 4%, metals 4%, rubber and plastics 4%

### Import goods\* (2016):

Automotive 11%, IT-hardware, electronics, optical goods 11%, machines 8%, chemical goods 8%, electrical goods 6%, metals 5%, pharmaceuticals 5%, oil and natural gas 5%, food and feed 5%, other vehicles 4%

\*top ten product groups

## Germany's EU Trade Relations

in EUR billion

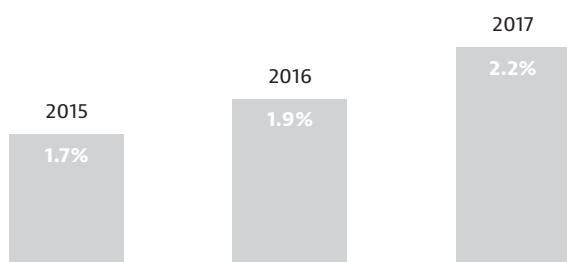
	2015		2016		2017	
Exports	693	+6.8%	706	+1.9%	750	+6.3%
Imports	622	+4.5%	632	+1.6%	683	+7.9%
Balance	+71		+74		+67	

## Economic Development

	2015	2016	2017
GDP (nominal in EUR billion)	3,044	3,144	3,263
Per capita GDP (in EUR)	37,260	39,745	38,183
Inflation rate	0.3%	0.5%	1.8%
Unemployment rate	4.3%	3.9%	3.7%

## GDP Growth

real annual change in percent



Sources: Federal Statistical Office, IFM Bonn, fDi Markets 2017, Germany Trade & Invest 2017

## GDP Formation 2017

